



© The Linde Group

Building packages for storage tanks

- Complete reporting ITP, dimension reports etc.
- Reducing total cost of ownership – due to prefabricated materials and large sheet plates (16,000 mm x 4,000 mm max. plate size)
- Marking - Cutting – Beveling - Forming - Welding
- 2D and 3D cold metal forming
- Materials:
steel, stainless steel, aluminium, 5%/9% Ni-steel
- Assembly assortment according to customers requirements results in easy installation on site
- Proven and certified processes assuring highest quality combined with on-time delivery
- Batch tracking to the smallest part
- Global logistics in place (road, railway, ship, air)
- Full scope of supply, from bottom plates to roof plates
- ISO 9001 certified



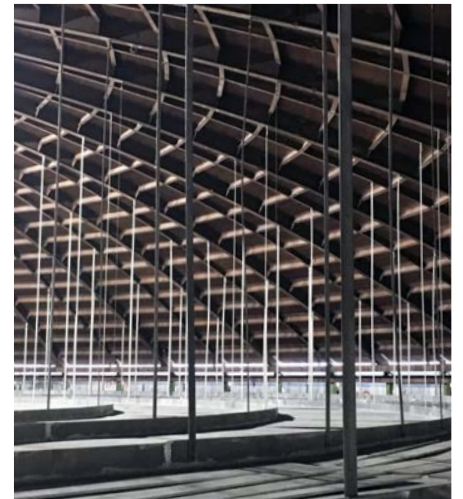
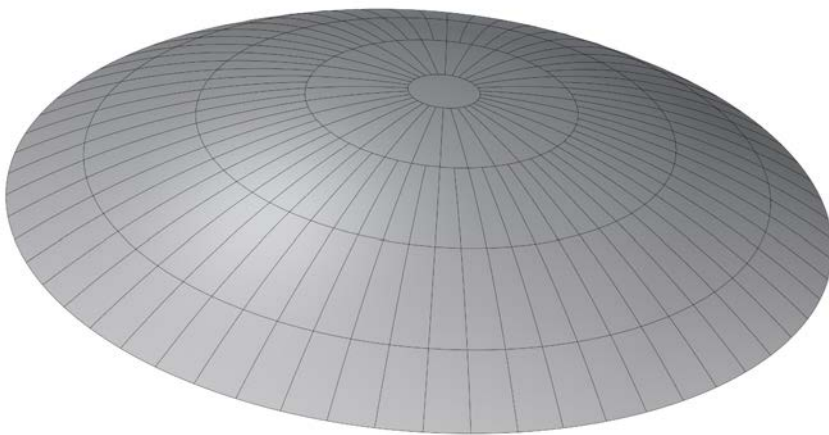
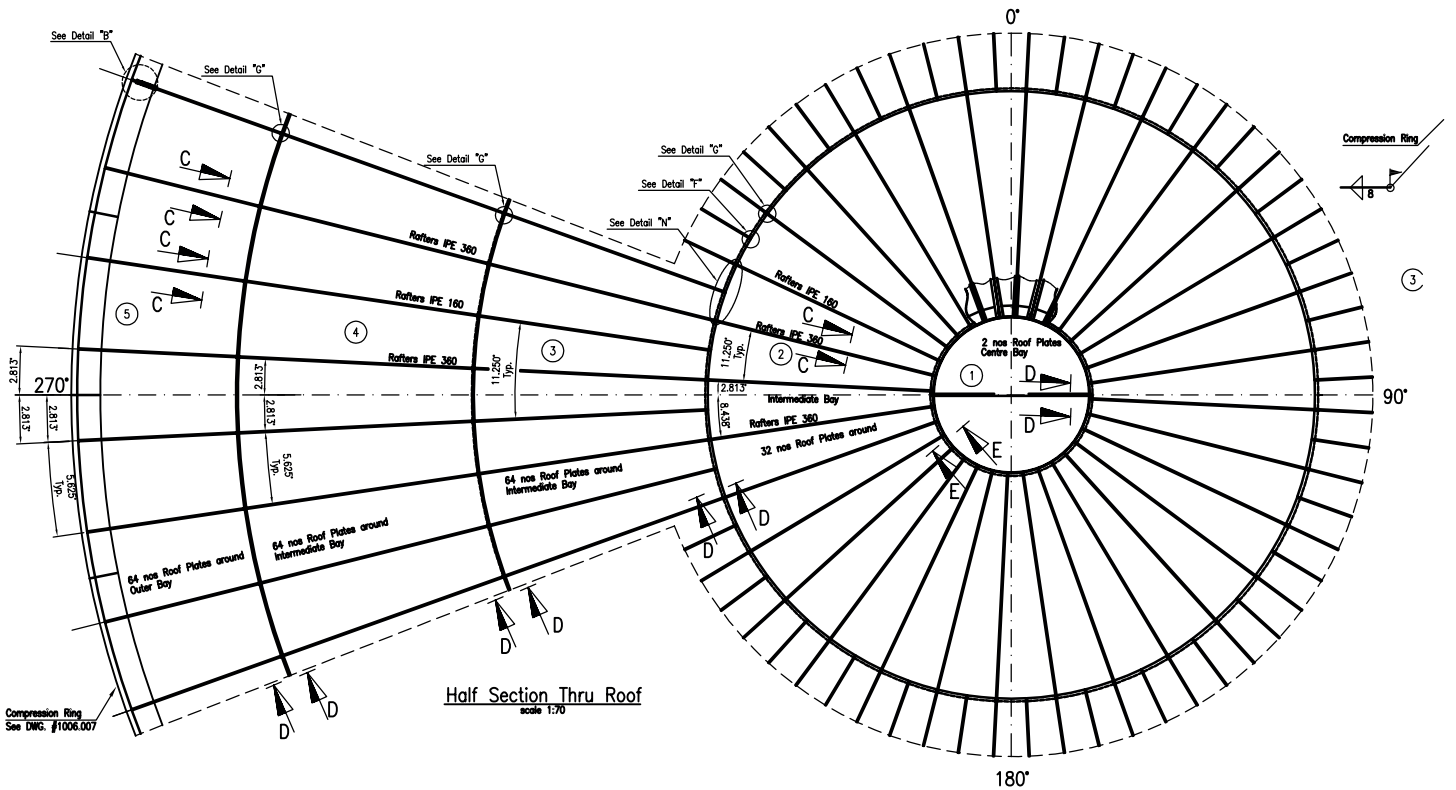
The company

Ostseestaal has built up an excellent reputation as partner for the supply of tank coat sheets.

We offer the entire production process, starting from the handling of the free form surfaces to the pre-cut and the 3D forming of the sheet metal plates. All the production processes are inspected, analysed and documented by a continuous quality assurance, guaranteeing the highest quality standards.

Latest key projects: "Portovaya" and "Tobolsk" in cooperation with:

**Linde AG, SPG-Steiner GmbH, Ferrostaal Industrieanlagen Libyen GmbH,
ThyssenKrupp Schulte GmbH, TGE Gas Engineering GmbH**



Recent Project:

Customer: Linde AG, München
Project: SRDI Oil & Gas Peton, Portovaya
Plant: Mid-Scale-LNG

Tank Dimensions:

approx. diameter: 48 m
approx. height: 30 m

Scope of supply:

wall liner, outer tank bottom plates, roof plates, hangers, suspended deck
 Materials: S235 /1.4301/EN-AW5083